



69 Houghlahans Creek Road Teven NSW

4 3 4

Set on five serene acres in one of the region's most tightly held pockets, this property delivers a rare combination of privacy, natural beauty and everyday convenience. Surrounded by native forest and striking bush rock, the home blends effortlessly into its landscape, creating a peaceful retreat just moments from town.

Crafted with character and warmth, the residence showcases rich hardwood finishes and timeless brickwork, offering a cosy and inviting atmosphere throughout. A flexible floorplan provides multiple living zones—both formal and informal—and the option for three or four bedrooms, making it ideal for families or those seeking space to retreat.

[For full version visit the website](https://www.byronbaypropertyvalues.com.au/sale/nsw/northern-rivers/teven/residential/house/8668968)

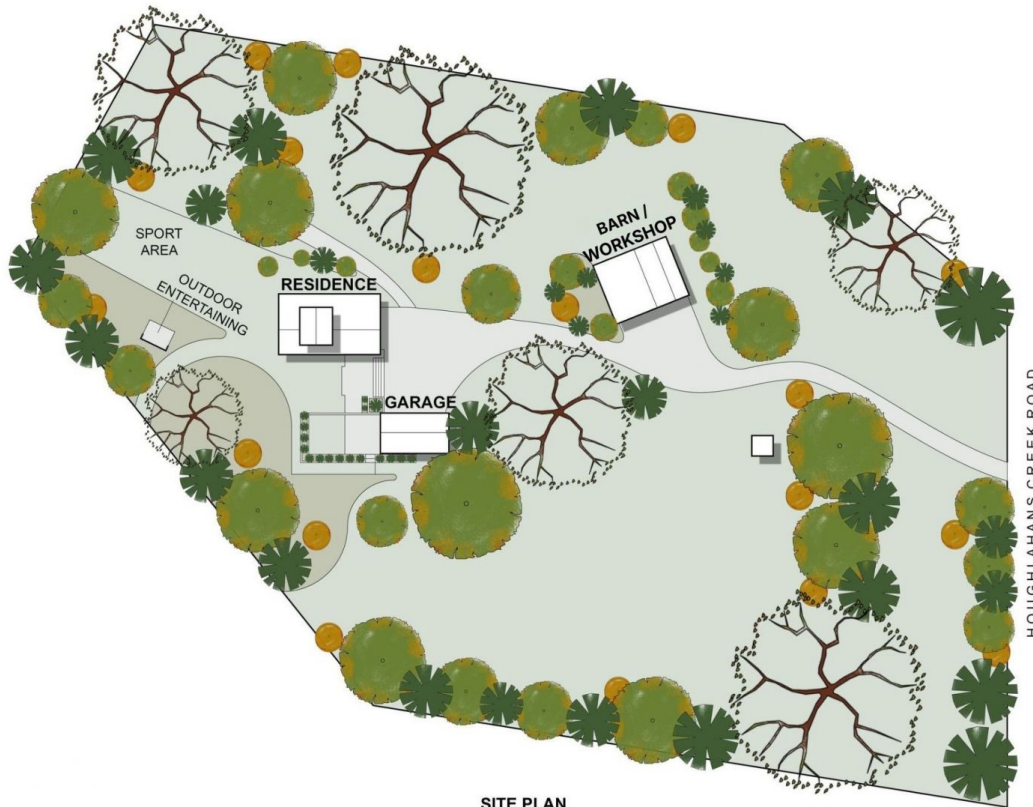
Type : House
Price : Contact Agent
Land Size : 2.02 ha
View : <https://www.byronbaypropertyvalues.com.au/sale/nsw/northern-rivers/teven/residential/house/8668968>



Braden Walters
0411 637 373



Harry McKinnon
66874447



SITE PLAN
(NOT TO SCALE)

| APPROXIMATE AREAS | |
|----------------------|---------------------|
| INTERNAL FLOOR SPACE | - 307m ² |
| EXTERNAL FLOOR SPACE | - 86m ² |
| GARAGE | - 88m ² |

69 Houghlahans Creek Road, Teven

Floor Plan Disclaimer: Media Drive (MD) floor plans / site plans are intended as an approximate guide only. No representations or warranties of any nature are given or intended and any person using this information other than as a guide should always rely on their own enquiries. Media Drive property marketing services / 0413979054 / Photography, Floor plans, Video, Aerial photography / www.mediadrive.com.au

4 3 2+



FIRST FLOOR : 26m²



GARAGE : 88m²
(NOT IN POSITION)



MAIN HOUSE : 126m²



BARN / WORKSHOP : 155m²

69 Houghlahans Creek Road, Teven

Floor Plan Disclaimer: Media Drive (MD) floor plans / site plans are intended as an approximate guide only. No representations or warranties of any nature are given or intended and any person using this information other than as a guide should always rely on their own enquiries. Media Drive property marketing services / 0413979054 / Photography, Floor plans, Video, Aerial photography / www.mediadrive.com.au

4 3 2+



| APPROXIMATE AREAS | |
|----------------------|---------------------|
| INTERNAL FLOOR SPACE | - 307m ² |
| EXTERNAL FLOOR SPACE | - 86m ² |
| GARAGE | - 88m ² |