



6 Bridge Drive Wardell NSW

3 3 4

Set in an elevated position overlooking the Richmond River, this beautifully presented home offers exceptional lifestyle, comfort and practicality in one of the Northern Rivers' most peaceful village settings. With river views, modern finishes and effortless accessibility throughout, this is a rare rental opportunity in a tightly held pocket.

The home includes three generous bedrooms and three bathrooms, with the main bedroom featuring a private ensuite and spa bath. The open-plan living and dining area is air-conditioned and flows out to a large covered deck-perfect for relaxing or entertaining while taking in the outlook.

Type : House
Land Size : 487 sqm
View : <https://www.byronbaypropertyvalues.com.au/lease/nsw/northern-rivers/wardell/residential/house/8570826>

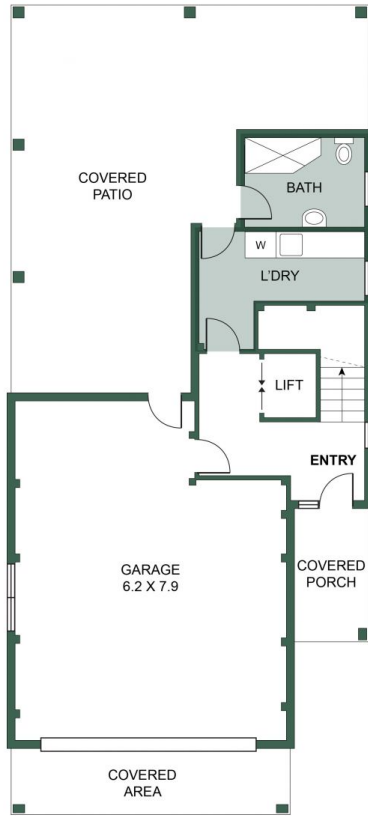
[For full version visit the website](https://www.byronbaypropertyvalues.com.au)



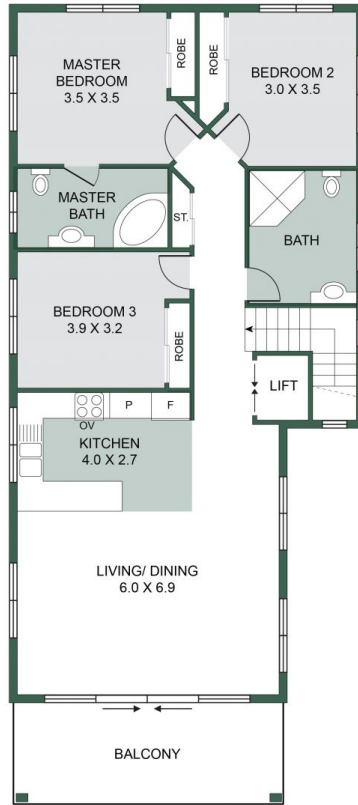
Braden Walters
0411 637 373



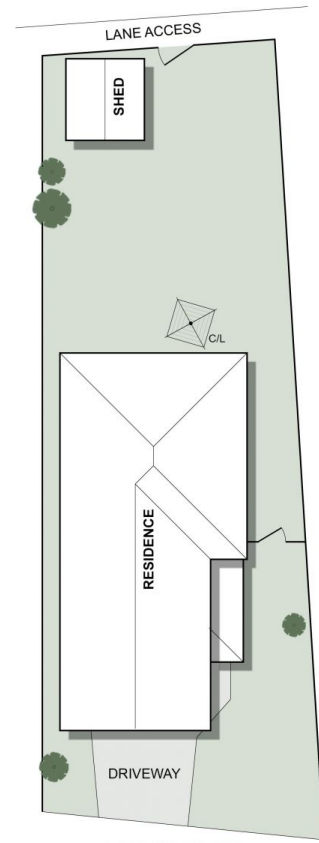
Charlie McDonald
02 6687 4447



LOWER GROUND FLOOR : 77m²



GROUND FLOOR : 114m²



BRIDGE DRIVE
SITE PLAN

6 Bridge Drive, Wardell

Floor Plan Disclaimer: Media Drive (MD) floor plans / site plans are intended as an approximate guide only. No representations or warranties of any nature are given or intended and any person using this information other than as a guide should always rely on their own enquiries. Media Drive property marketing services / 0413379054 / Photography, Floor plans, Video, Aerial photography / www.mediadrive.com.au



APPROXIMATE AREAS

INTERNAL FLOOR SPACE - 147m ²
EXTERNAL FLOOR SPACE - 83m ²
GARAGE - 44m ²

