

## 12 Patchs Beach Road East Wardell NSW

4 2 2

The spacious 4 bedroom home boasts ample room for family living, featuring large living areas, modern finishes, and stunning outdoor spaces. A well-designed floorplan ensures both comfort and functionality, with breathtaking views of the surrounding landscape, including the lush macadamia orchard and peaceful rice paddies.

**Type** : House  
**Land Size** : 1000 sqm  
**View** : <https://www.byronbaypropertyvalues.com.au/lease/nsw/northern-rivers/east-wardell/residential/house/8492349>

The property is a paradise for nature lovers and agricultural enthusiasts alike.

- Large and open living spaces with seamless indoor-outdoor flow
- 13.5 Kilowatt solar system

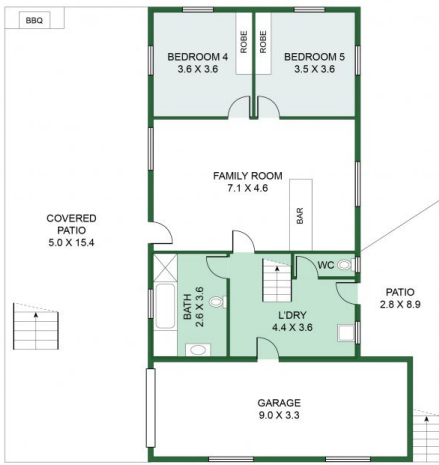
[For full version visit the website](#)



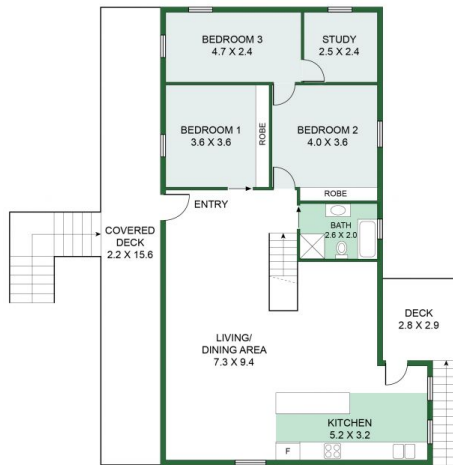
**Harry McKinnon**  
66874447



**Braden Walters**  
0411 637 373



GROUND FLOOR



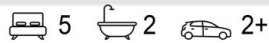
FIRST FLOOR



SITE PLAN

## 12 Patches Beach Road, East Wardell

**Floor Plan Disclaimer:** Media Drive (MD) floor plans / site plans are intended as an approximate guide only. No representations or warranties of any nature are given or intended and any person using this information other than as a guide should always rely on their own enquiries. Media Drive property marketing services / (041) 339 7654 / Photography, Floor plans, Video, Aerial photography / www.mediadrive.com.au



| APPROXIMATE AREAS    |                     |
|----------------------|---------------------|
| INTERNAL FLOOR SPACE | - 206m <sup>2</sup> |
| EXTERNAL FLOOR SPACE | - 137m <sup>2</sup> |
| GARAGE               | - 30m <sup>2</sup>  |