



275 Cameron Road McLeans Ridges NSW

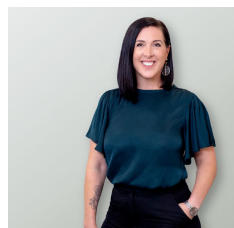
5 3 4

Set high on the McLeans Ridges escarpment, this remarkable property captures breathtaking valley and mountain vistas, while offering absolute privacy, natural beauty and an exceptional hinterland lifestyle.

At the heart of the property is a spacious and beautifully designed four-bedroom, two-bathroom home that blends comfort, style and practicality. The light-filled open plan kitchen, living and dining area is ideal for relaxed family living, with the kitchen featuring quality finishes, a generous butler's pantry and seamless flow to both indoor and outdoor entertaining spaces. A separate family room adds further flexibility, while the large rear deck with spa provides the perfect vantage point to take in the panoramic

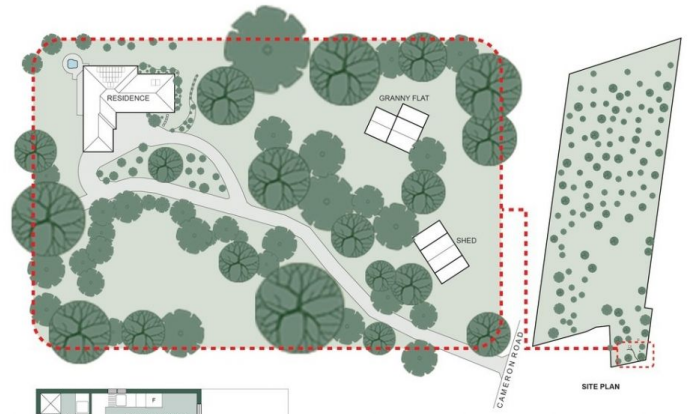
Type : Acreage/Semi-Rural
Price : \$ 1,900,000
Building Size : 256 sqm
Land Size : 19.61 ha
View : <https://www.byronbaypropertyvalues.com.au/sale/nsw/northern-rivers/mcleans-ridges/residential/acreagesemirural/8376999>

[For full version visit the website](#)





RESIDENCE : 256m²



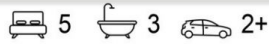
SITE PLAN



GRANNY FLAT : 50m²

275 Cameron Road, Mcleans Ridges

Floor Plan Disclaimer: Media Drive (MD) floor plans / site plans are intended as an approximate guide only. No representations or warranties of any nature are given or intended and any person using this information other than as a guide should always rely on their own enquiries Media Drive property marketing services / (04)13979254 / Photography, Floor plans, Video, Aerial photography / www.mediadrive.com.au



APPROXIMATE AREAS	
INTERNAL FLOOR SPACE	- 256m ²
EXTERNAL FLOOR SPACE	- 120m ²
GARAGE	- 59m ²