



## 20 Mosman Chase Lennox Head NSW

5 🛏 3 🚗 2 🚗

Discover a remarkable blend of coastal elegance and modern comfort at this near-new, custom-designed home in the prestigious Vision Estate of Lennox Head. Just minutes on foot or bike to Boulders and Sharpes Beaches, this property offers the ultimate lifestyle in one of the area's most sought-after locations.

Designed to embrace a seamless indoor-outdoor flow, the home is perfect for relaxed coastal living. It features a mineral pool and an outdoor kitchen, ideal for alfresco dining and entertaining.

Inside, the thoughtful design and meticulous craftsmanship are evident. The versatile floorplan caters to downsizers,

[For full version visit the website](https://www.byronbaypropertyvalues.com.au)

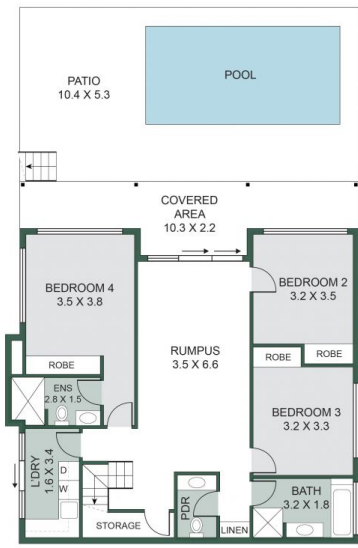
**Type** : House  
**Price** : \$ 2,100,000  
**Land Size** : 818 sqm  
**View** : <https://www.byronbaypropertyvalues.com.au/sale/nsw/northern-rivers/lennox-head/residential/house/8260882>



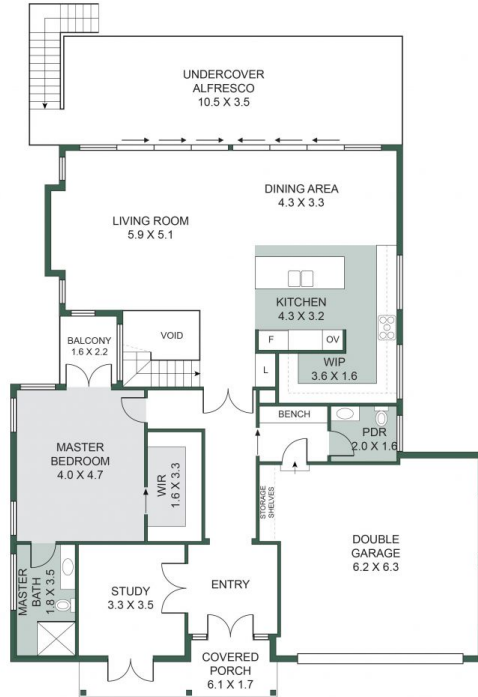
**Braden Walters**  
0411 637 373



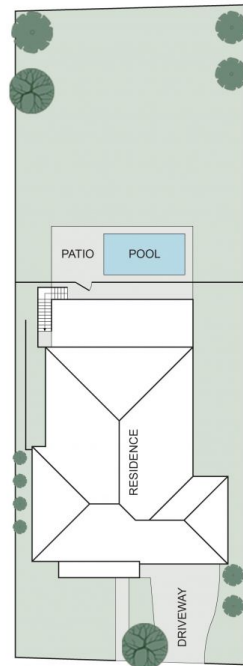
**Harry McKinnon**  
66874447



GROUND FLOOR



FIRST FLOOR



SITE PLAN

## 20 Mosman Chase, Lennox Head

Floor Plan Disclaimer: Media Drive (MD) floor plans / site plans are intended as an approximate guide only. No representations or warranties of any nature are given or intended and any person using this information other than as a guide should always rely on their own enquiries Media Drive property marketing services / 0412379654 / Photography, Floor plans, Video, Aerial photography / www.mediadrive.com.au



APPROXIMATE AREAS	
INTERNAL FLOOR SPACE	- 246m <sup>2</sup>
EXTERNAL FLOOR SPACE	- 122m <sup>2</sup>
GARAGE	- 40m <sup>2</sup>