



16 Satinwood Drive McLeans Ridges NSW

5 3 2

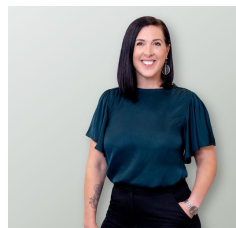
Nestled in the serene countryside, this captivating Queenslander harmoniously blends rustic charm with modern luxury, offering a tranquil retreat against the stunning backdrop of the Eltham Valley and the Nightcap ranges.

Conveniently located just 10 minutes from Alstonville, under 30 minutes from Ballina Airport, and 35 minutes from Byron Bay, this picturesque property provides peace and privacy while remaining central to all amenities. Nearby gems like the Eltham Pub and Harvest Newrybar cater to those seeking great pubs, bars, and restaurants.

The main dwelling boasts three elegant bedrooms,

[For full version visit the website](https://www.byronbaypropertyvalues.com.au)

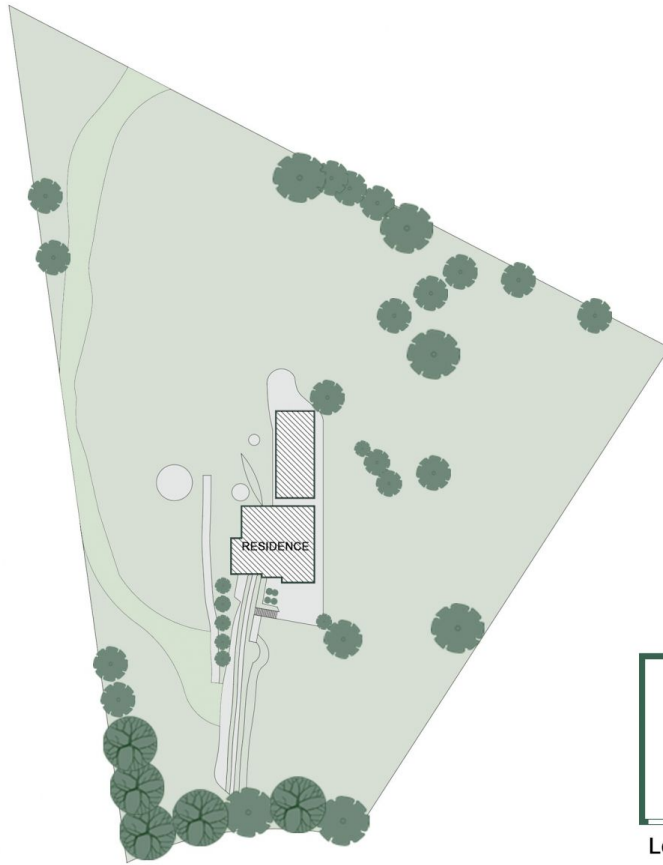
Type : House
Price : \$ 1,810,000
Building Size : 256 sqm
Land Size : 10000 sqm
View : <https://www.byronbaypropertyvalues.com.au/sale/nsw/northern-rivers/mcleans-ridges/residential/house/7951510>



Yonika Davis



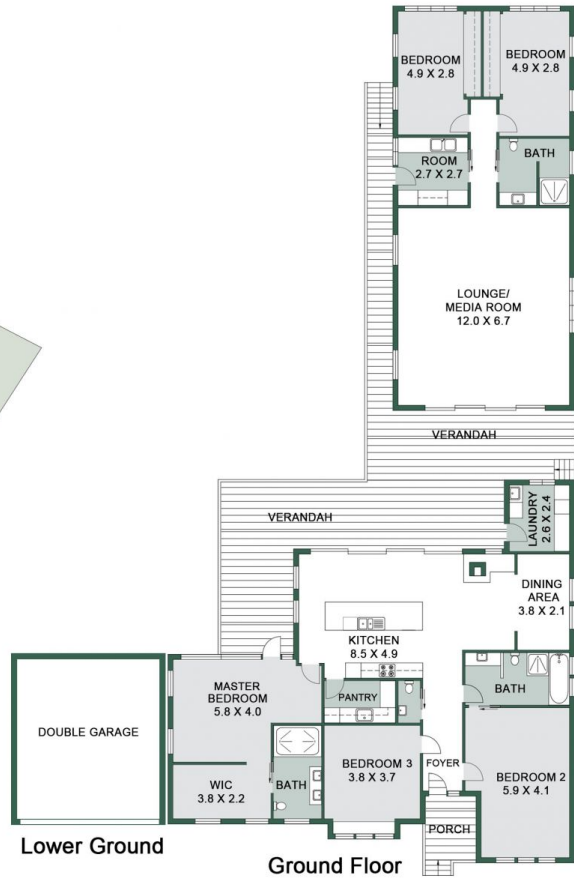
Braden Walters



Site Plan

16 Satinwood Dr McLeans Ridges

Floor Plan Disclaimer: Media Drive (MD) floor plans / site plans are intended as an approximate guide only. No representations or warranties of any nature are given or intended and any person using this information other than as a guide should always rely on their own enquiries. Media Drive property marketing services / 0413973554 / Photography, Floor plans, Video, Aerial photography / www.mediadrive.com.au



APPROXIMATE AREAS	
INTERNAL FLOOR SPACE	- 256m ²
EXTERNAL FLOOR SPACE	- 81m ²

