



24/183 Broken Head Road Suffolk Park NSW

2 2 1

Nestled within the highly sought-after 'Beachbreak' complex, just a short stroll to the popular Tallow Beach, this bright and airy apartment presents an enviable beachside lifestyle.

The open-plan lounge, kitchen, and dining space feature elevated ceilings that grant a sense of space, while glass sliding doors and louvres result in light-filled interiors. Additionally, the north-facing covered balcony offers leafy outlooks and coastal breezes.

Ideal for first home buyers, downsizers, investors, and holiday house seekers; the apartment accommodates two spacious bedrooms, one with an ensuite and both with

[For full version visit the website](https://www.byronbaypropertyvalues.com.au)

Type : Apartment

Price : \$ 1,120,000

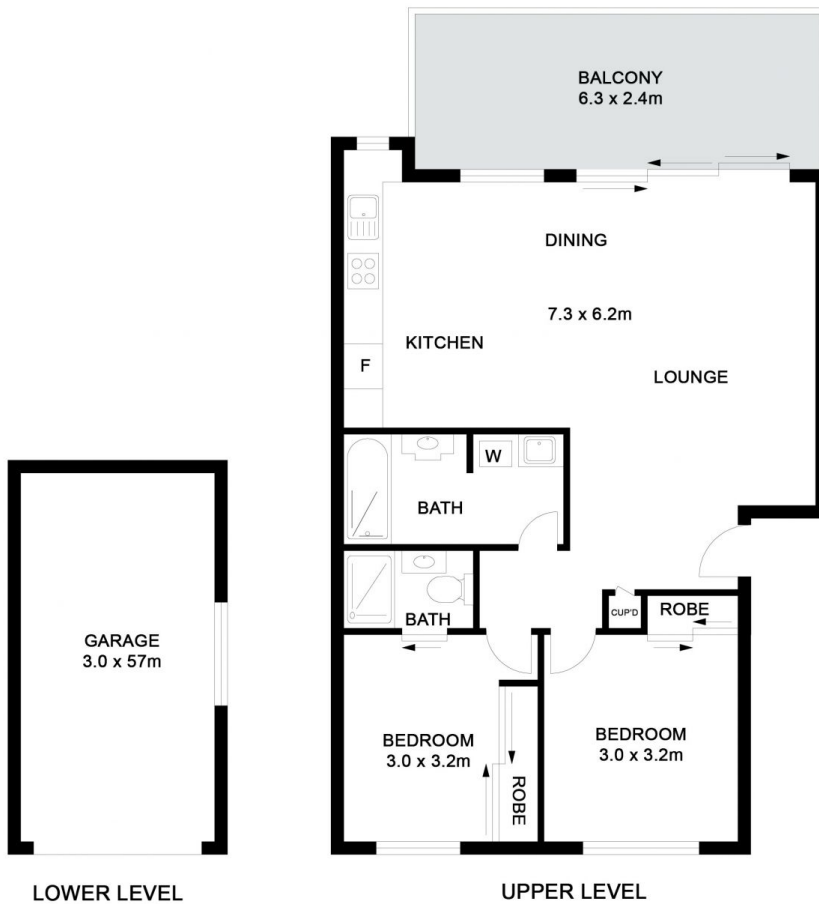
View : <https://www.byronbaypropertyvalues.com.au/sale/nsw/northern-rivers/suffolk-park/residential/apartment/7146483>



Braden Walters
0411 637 373



Adam Jones
0438 928 083



LOWER LEVEL

UPPER LEVEL

24/183-205 Broken Head Road, Suffolk Park

Floor Plan Disclaimer: Media Drive (MD) floor plans / site plans are intended as an approximate guide only. No representations or warranties of any nature are given or intended and any person using this information other than as a guide should always rely on their own enquiries. Media Drive property marketing services / 0413973554 / Photography, Floor plans, Video, Aerial photography / www.mediadrive.com.au



APPROXIMATE AREAS	
INTERNAL FLOOR SPACE -	68m ²
EXTERNAL FLOOR SPACE -	15m ²
GARAGE -	17m ²