



## 2/17 Marina Place West Ballina NSW

3 2 2

From its exceptional waterfront position in a sought-after riverside enclave, this immaculately maintained residence showcases a superb lifestyle surrounded by uninterrupted views over the Richmond River. It sits right on the edge of the water and combines light-filled living spaces and sunlit outdoor areas to provide a very rare opportunity to join the exclusive Marina Place community. It is presented in great condition yet still holds lots of potential to update or enhance to add value and create a stunning riverfront residence.

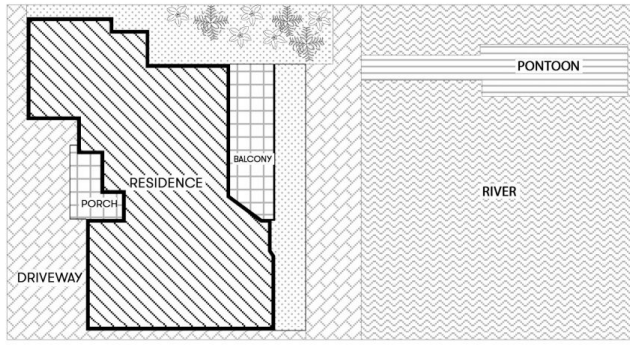
- Direct access to the waterfront promenade, onsite jetty and pontoon
- A bright two-storey layout with generous living spaces on

[For full version visit the website](#)

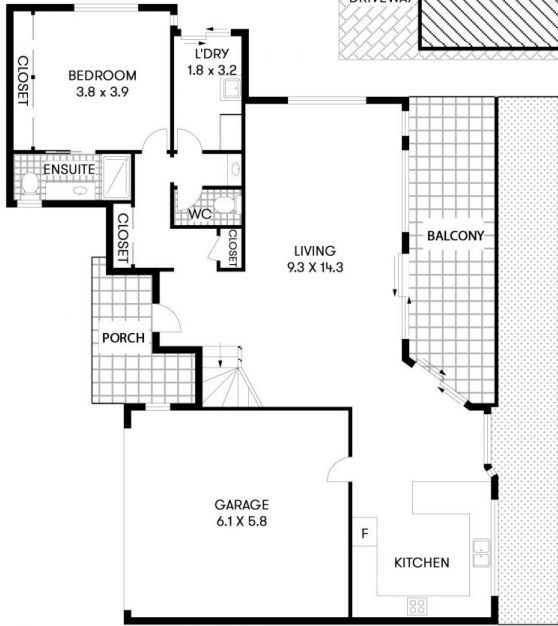
**Type** : House  
**Price** : \$ 1,255,000  
**Building Size** : 319 sqm  
**View** : <https://www.byronbaypropertyvalues.com.au/sale/nsw/northern-rivers/west-ballina/residential/house/7146339>



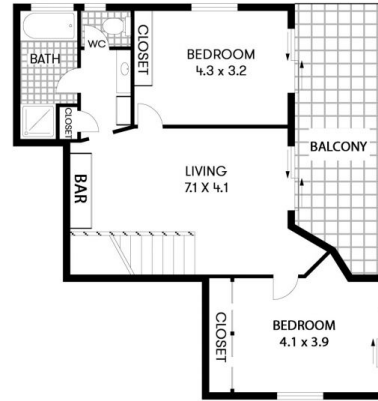
**Braden Walters**  
0411 637 373



SITE PLAN  
(NOT TO SCALE)



GROUND FLOOR



FIRST FLOOR

2/17 MARINA PLACE

WEST BALLINA

Floor Plan Disclaimer: Media Drive (MD) floor plans / site plans are intended as an approximate guide only. No representations or warranties of any nature are given or intended and any person using this information other than as a guide should always rely on their own enquiries. Media Drive property marketing services / 0413973054 / Photography, Floor plans, Video, Aerial photography / www.mediadrive.com.au



APPROXIMATE AREAS	
INTERNAL FLOOR SPACE	- 203m <sup>2</sup>
EXTERNAL FLOOR SPACE	- 44m <sup>2</sup>
GARAGE	- 35m <sup>2</sup>