



## 19 Palm-Lily Crescent Bangalow NSW

3 2 2

Displaying a fresh contemporary design that perfectly complements its traditional appeal, this striking character home now offers a stylish and spacious retreat that's perfect for the modern family. It features a bright interior layout with many smart new updates and a focus on low maintenance living and entertaining. When it comes to convenience and lifestyle you can't go past this great location that's a short drive to Bangalow's shops, cafes and primary school, and just 15 minutes to Byron Bay and beaches.

- Cleverly modernised and finished with high attention to quality and detail
- Designed to provide a great home for easy indoor-outdoor

[For full version visit the website](https://www.byronbaypropertyvalues.com.au)

**Type** : House

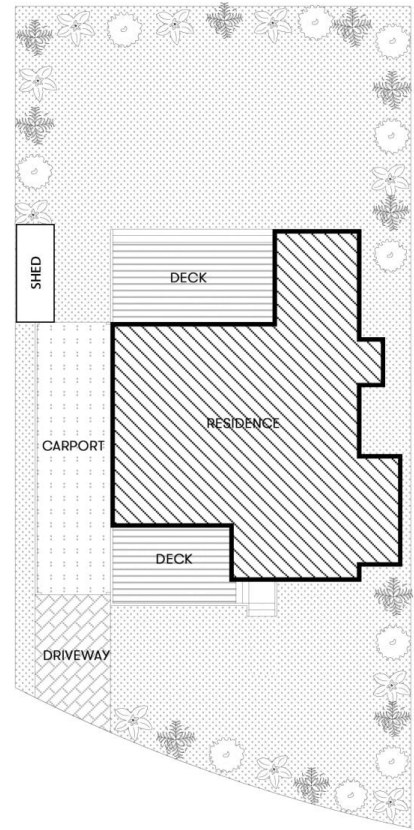
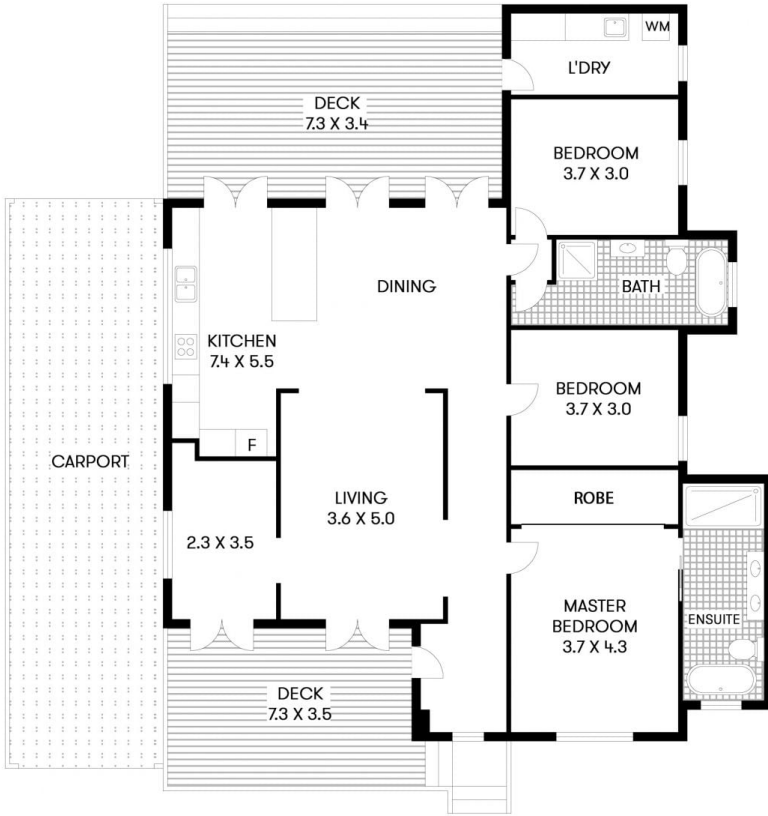
**Price** : \$ 1,675,000

**View** : <https://www.byronbaypropertyvalues.com.au/sale/nsw/northern-rivers/bangalow/residential/house/7146338>



**Braden Walters**

0411 637 373



**19 PALM-LILY CRESCENT BANGALOW**

Floor Plan Disclaimer: Media Drive (MD) floor plans / site plans are intended as an approximate guide only. No representations or warranties of any nature are given or intended and any person using this information other than as a guide should always rely on their own enquiries. Media Drive property marketing services / 0413979554 / Photography, Floor plans, Video, Aerial photography / www.mediadrive.com.au



APPROXIMATE AREAS	
INTERNAL FLOOR SPACE	- 130m <sup>2</sup>
EXTERNAL FLOOR SPACE	- 51m <sup>2</sup>
GARAGE	- 42m <sup>2</sup>