



11 Northumberland Drive East Ballina NSW

5 3 2

Smart modern updates, light filled interior spaces and leafy bushland outlooks merge to create the perfect household in this high set residence. Set on a large 840sqm parcel of land in a sought-after section of East Ballina, the immaculate home is ideally configured to meet the needs of today's growing families with a versatile layout suitable for multiple generations with spaces for all types of entertaining. This quality property promises to deliver a comfortable and ultra-private lifestyle in a super quiet position that's easily accessible to beaches, North Creek, quality schools, shops and East Ballina Golf course.

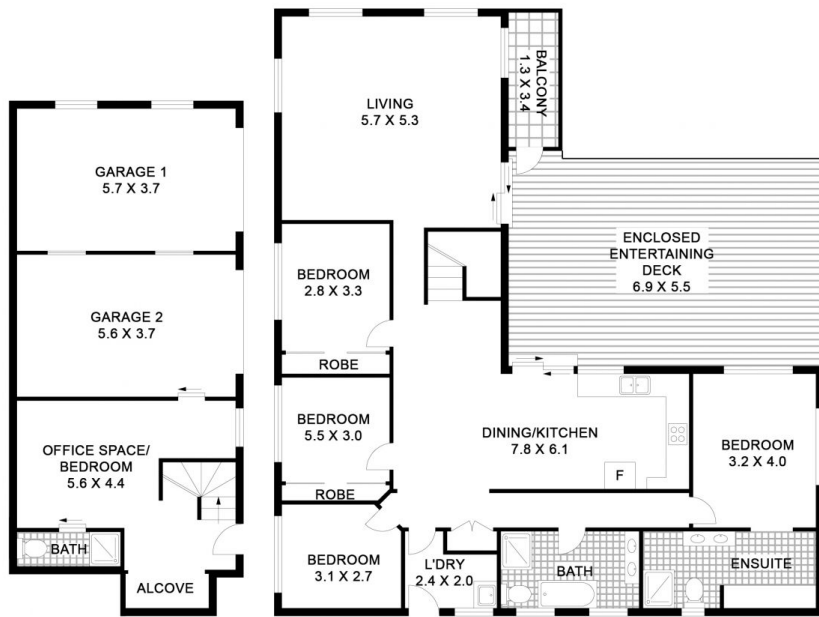
Freshly renovated and featuring many stylish finishes throughout

[For full version visit the website](https://www.byronbaypropertyvalues.com.au)

Type : House
Price : \$ 905,000
Land Size : 840 sqm
View : <https://www.byronbaypropertyvalues.com.au/sale/nsw/northern-rivers/east-ballina/residential/house/7146336>

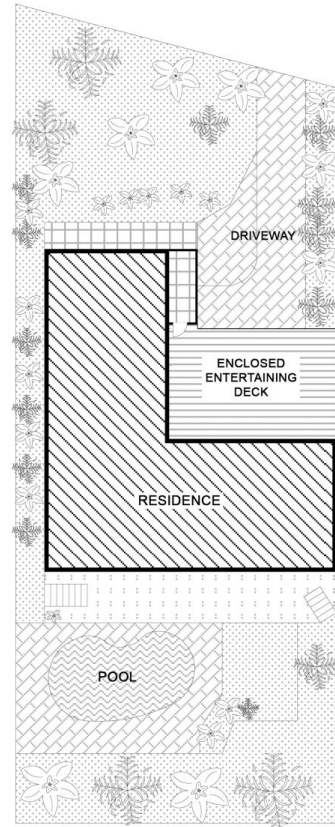


Braden Walters
0411 637 373



LOWER GROUND FLOOR

GROUND FLOOR



SITE PLAN
(NOT TO SCALE)

11 NORTHUMBERLAND DRIVE EAST BALLINA

Floor Plan Disclaimer: Media Drive (MD) floor plans / site plans are intended as an approximate guide only. No representations or warranties of any nature are given or intended and any person using this information other than as a guide should always rely on their own enquiries. Media Drive property marketing services / 0413973554 / Photography, Floor plans, Video, Aerial photography / www.mediadrive.com.au



APPROXIMATE AREAS

INTERNAL FLOOR SPACE - 201m²

EXTERNAL FLOOR SPACE - 50m²

GARAGE - 43m²